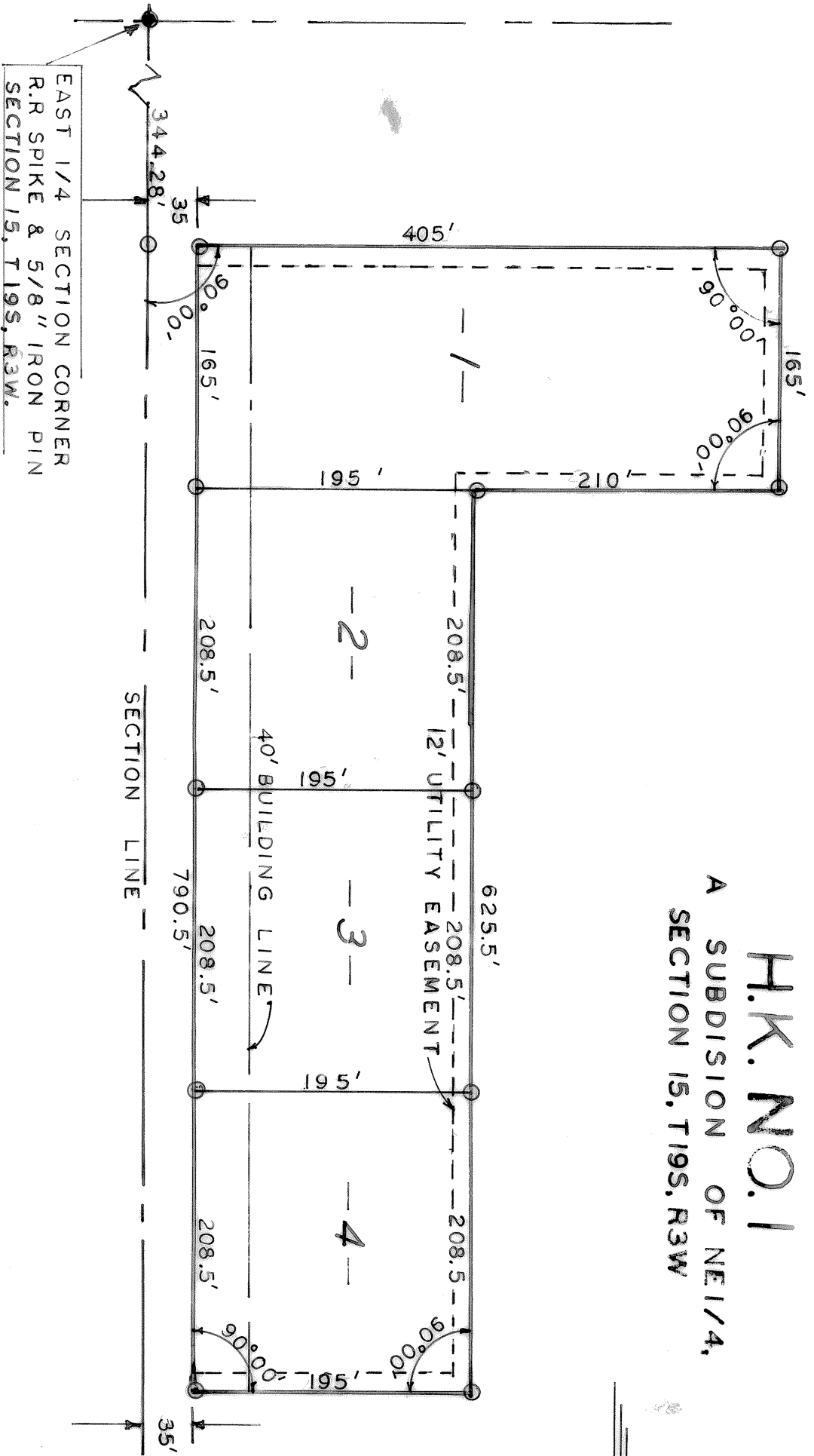


H.K. NO. 1
A SUBDIVISION OF NE 1/4,
SECTION 15, T.19S, R.3W.

SCALE 1"=100'



OWNERS CERTIFICATION & DEDICATION.

STATE OF KANSAS)
 COUNTY OF McPHERSON) SS

This is to certify that the undersigned owners of the land described in the Surveyors Certificate; have caused the same to be surveyed and subdivided on the accompanying plat into lots, blocks, streets and other public ways under the name of H.K. No. 1 that all highways, streets, alleys, easements as denoted on the plat are hereby dedicated to and for the use of the public for the purpose of constructing, operating, maintaining and repairing public improvements; and further that the land contained herein is held and shall be conveyed subject to any applicable restrictions, reservations, and covenants now on file or hereinafter filed in the Office of the Register of Deeds of McPherson County, Kansas.

Date Signed 5-24-77

Homer Haddock, Jr.
 Owners Signature

Date Signed 7-4-77

Nancy Kimmel
 Owners Signature

NOTARY CERTIFICATE

STATE OF KANSAS)
 COUNTY OF McPHERSON) SS

The foregoing instrument was acknowledged before me this 24 day of May, 1977, by

(SEAL)

Homer Haddock, Jr.
 My Commission expires _____

Thorne L. Beck Notary Public

SURVEYORS CERTIFICATE AND DESCRIPTION

I, the undersigned Licensed Professional Engineer of the State of Kansas, do hereby certify that the following described tract of land was surveyed on the 19 day of May, 1977, and the accompanying final Plat prepared and that all the monuments shown herein actually exist and their positions are correctly shown to the best of my knowledge and belief.

Beginning at a point 344.28' North and 350' West of the East 1/4 Corner of Section 15 (Fifteen), Township 19S (Nineteen South) Range 3W (Three West) in McPherson County Kansas; thence north parallel to the east sectionline a distance of 790.5' feet, thence west at an angle of 90°00' a distance of 195.0' feet, thence south 210.0' feet, thence south at 90°00', 165.0' feet, thence east 405.0' feet to the point of beginning, said tract contains 4.334 Acres. Signed this 19 day of May, 1977.

PLANNING COMMISSION CERTIFICATE

STATE OF KANSAS.
 COUNTY OF McPHERSON) SS

This Plat was approved by the McPherson City Planning Commission on June 30, 1977, and was recommended for approval by the Governing body of the City of McPherson, Kansas.
 Signed June 30, 1977.

Attest William G. Heston
 Secretary, acting
 Chairman.

COUNTY CLERK AND CITY CLERK CERTIFICATE

STATE OF KANSAS)
 COUNTY OF McPHERSON) SS

We, the undersigned County Clerk of the McPherson County Kansas, and City Clerk of the City of McPherson, Kansas, within our respective jurisdictions do hereby certify that the date of this certificate, all due and owing taxes and special assessments of any kind assessed against the land included in this plat have been paid.

Date signed May 24, 1977
W. M. ... County Clerk (Seal)
 Date signed July 11, 1977
... City Clerk (Seal)

GOVERNING BODY CERTIFICATE

STATE OF KANSAS)
 CITY OF McPHERSON) 33

This Plat approved and all dedications shown hereon, if any, are hereby accepted by the Governing Body of the City of McPherson, Kansas, on July 11, 1977.

Attest ... Mayor
... City Clerk

COUNTY COMMISSIONERS' CERTIFICATE

STATE OF KANSAS
 COUNTY OF McPHERSON

The dedications on this plat are hereby accepted by the Board of County Commissioners of McPherson County Kansas on Monday of June 1977.

Attest ... Chairman

REGISTER OF DEEDS CERTIFICATE

Entered in Transfer record on _____ day of _____, 19____.

 County Clerk.

CERTIFICATE AS TO COUNTY PUBLIC IMPROVEMENTS

I, the undersigned, do hereby certify that the required guarantees covering completion of improvements pertaining to the subject plat have been properly filed and accepted by the public authorities responsible for such improvements, if any such improvements be required.

Signed this 14 day of June, 1977,

(SEAL) Thorne L. Beck
 McPherson County Engineer

2987
 State of Kansas, McPherson Co., SS
 This instrument was filed for record on 15 day of July, A.D., 1977
 at 2:45 o'clock P.M., and duly recorded in book 1 on page 33
Richard Helmer
 Register of Deeds
 \$ 20.00